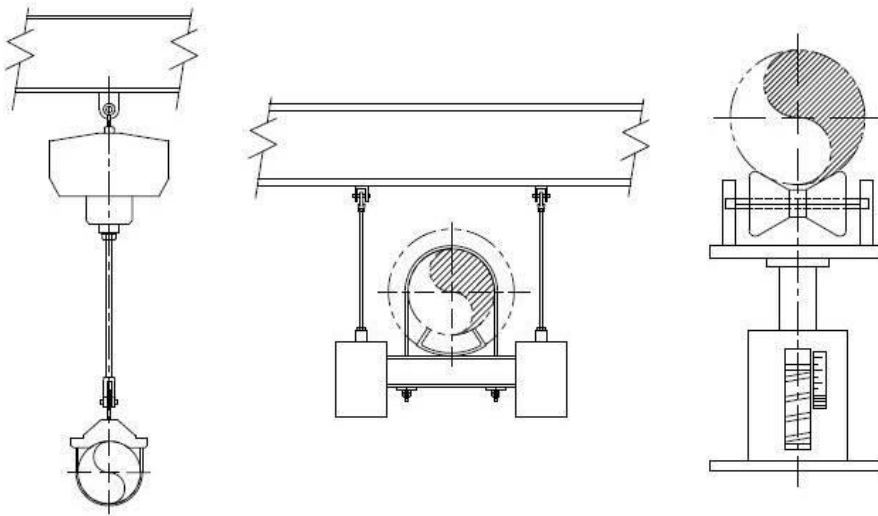


TRAVEL STOPS FOR FLEXIBLE TYPE SUPPORTS (CONSTANT SUPPORT AND VARIABLE SPRING)



February 2017

OST SERVICES



Introduction

These type supports, such as Constant Support Hangers and Variable Spring Hangers are supplied with Travel Stops which facilitate installation by locking the Constant Support Hanger at its installed position and locking the Variable Spring at its installed load. The Travel Stops are removed after hydrostatic testing and prior to the system becoming operational. Travel Stops are also used in temporary situations, such as underload and overload conditions.

Depending on the manufacturers involved, the Travel Stops can come in a wide variety of designs with many features. Some Travel Stops permit the device to travel the full range of their travel range, whereas others only allow the supports to travel a portion of their range, unless specified otherwise.

Hydrostatic

With the support systems normally utilized for steam service, the selection of a support scheme is based upon a number of factors involving the weight of the piping, the support scheme, and the weight ratio between the piping and the support.

Essentially, the support systems for steam heat lines, represent the support systems for high pressure Steam lines and are designed to support the weight of the piping and the weight of the steam.

A support system should be designed to support the weight of the piping and the weight of the steam during the temporary overload conditions.

Support Hangers prevent deflection of the steam lines or piping, particularly to a location for which it was not intended to displace. For example, a location normally anticipated to grow up from cold to hot could displace in the opposite direction, during the temporary overload conditions. This in turn can result in binding at branch line